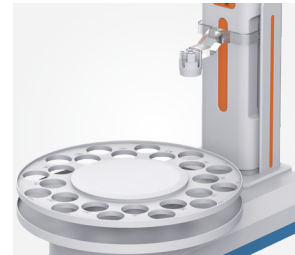


M500T Multi-parameter Analyzer



Large color touch screen
Easy operation and comfortable experience



Autosampler available
Make measurement more efficient



User management system



Multiple external devices available
PC, autosampler, printer, scanning gun, USB flash disk, etc

GENERAL FEATURES

- Color High contrast LCD touchscreen, 7.0 inches.
- Intelligent operation system provides features including user management, calibration management, method management, data management and etc.
- Multi-reading feature allows auto-read, timed-read and continuous-read.
- Automatic/Manual temperature compensation ensures accurate results.
- Data Storage 1000 sets for each parameter (GLP-compliant).
- Data analysis feature helps user review, compare and recalculate results.
- Support for USB or RS-232 communication.
- Reset feature automatically resumes all settings back to factory default options.
- IP54 waterproof.

pH

- 1-6 points calibration with Standard Recognition.
- Selectable pH buffer groups, including DIN, NIST, USA, MERK, JIS, GB.
- Support for pH standard group customization.
- Automatic electrode diagnosis with pH slope and offset display.

Ion

- 1-6 points calibration
- Selectable measurement unit, including $\mu\text{g/L}$, mg/L , g/L , mmol/L , pX , ppm , ppb , etc.
- Multi-measurement modes are supported, including Direct Reading mode, Standard Addition mode, Sample Addition mode and GRAN mode.
- Over 10 methods are built-in, including F^- , Cl^- , Br^- , I^- , NO_3^- , BF_4^- , NH_4^+ , K^+ , Na^+ , Ca^{2+} , Cu^{2+} , Pb^{2+} , Ag^+ and etc., user-defined method is supported.

Conductivity

- 1-5 points calibration with Standard Recognition.
- Settable parameters, including cell constant, reference temperature (5/10/15/18/20/25°C), temperature compensation coefficient and TDS factor.
- Temperature compensation type (none, linear, pure water).

DO

- Support for air-saturated water or zero oxygen calibration.
- Auto barometric pressure compensation.
- Manual Salinity Factor Correction.
- Selectable pressure unit, including kPa , mbar , Torr , Atm .

Model	M500T	
Parameters	pH/EC/ISE/DO/Temp. (mV/ORP/pX/Resistivity/TDS/Sal./DO Saturation)	
pH	Range	-2.000 to 20.000 pH
	Resolution	0.1, 0.01, 0.001pH
	Accuracy	±0.002 pH
	Calibration Points	Up to 6
	Standard Customization	Yes
	Calibration Reminder	Yes
	Standard Recognition	NIST, GB, DIN, USA, MERK, JIS buffers
mV/ORP	Slope Limit	Yes
	Range	-2000.00 to 2000.00 mV
	Resolution	0.1, 0.01 mV
	Accuracy	reading whichever is greater
	EH ORP Mode	Yes
pX	ORP Calibration Points	1 custom point (relative mV)
	Range	-2.000 to 20.000 pX
	Resolution	0.1, 0.01, 0.001 pX
	Accuracy	±0.002 pX
ISE	Calibration Points	Up to 6
	Range	1.000e-9 to 9.999e+9
	Units	mol/L, mmol/L, g/L, mg/L, µg/L, ppm, ppb
	Resolution	Up to 4 significant digits
	Accuracy	±0.3%
Conductivity	Calibration Points	Up to 6
	Range	0.000 µS/cm to 2000 mS/cm
	Resolution	0.001 µS/cm minimum, various with range selection
	Accuracy	±0.5% FS
	Reference Temperature	5, 10, 15, 18, 20, 25 °C
	Calibration Points	Up to 5
	Calibration Reminder	Yes
Resistivity	Standard Recognition	10 µS/cm, 84 µS/cm, 500 µS/cm, 1413 µS/cm, 12.88 mS/cm; 146.5µS/cm, 1408µS/cm, 12.85mS/cm, 111.3mS/cm
	Range	5.00 Ω·cm~100.0 MΩ·cm
	Resolution	0.01 Ω·cm minimum
TDS	Accuracy	±0.5% FS
	Range	0.000~1000 ppt
	Resolution	0.001 ppm minimum, changed with range
Salinity	Accuracy	±0.5% FS
	Type	NaCl
	Range	0.0 ~ 80.0 ppt
	Resolution	0.1ppt
Dissolved Oxygen Concentration - Polarographic	Accuracy	±1ppt
	Range	0.00 to 99.99 ppm
	Resolution	0.01 ppm
	Accuracy	±0.10ppm, 0.00~50.00ppm ±0.50ppm, 50.0~99.99ppm
	Calibration Reminder	Yes
	Calibration Points	Air-saturated water or zero point
	Barometric Compensation	Yes
% Saturation -Polarographic	Manual Salinity Factor Correction	Yes
	Range	(0.0 to 600)%
	Resolution	0.10%
Temperature	Accuracy	±2.0%
	Range	-10 to 135 °C, 14 to 275 °F
	Unit	°C, °F
	Resolution	0.1
Measurement	Accuracy	±0.1
	Reading Mode	Auto Read (Fast, Medium, Slow), Timed, Continuous
	Reading Prompts	Reading, Stable, Locked
Data management	Temp. Compensation	ATC, MTC
	Data Storage	1000 Groups
	GLP Features	Yes
Inputs	Log Management	Yes
	pH Electrode	BNC(Q9)
	DO with Temp. Probe	4-pin aviation connector
Outputs	Conductivity with Temp. Probe	5-pin aviation connector
	USB	USB 2.0 flash memory device, PC, scanner,
Display options	printer, auto-sampler	
	Backlight	Yes
	Auto Shutdown	1~60 min, off
	IP Rating	IP54
General	Date and Time	Yes
	Power	AC Adapter, 100-240V AC input, DC24V output
	Dimensions	220×195×68 mm
	Weight	950g (2.09 lb)

Диаэм, Москва ■ ул. Магаданская, д. 7, к. 3 ■ тел./факс: 8 (800) 234-0508 ■ sales@dia-m.ru



С.-Петербург
spb@dia-m.ru

Новосибирск
nsk@dia-m.ru

Воронеж
vrn@dia-m.ru

Йошкар-Ола
nba@dia-m.ru

Красноярск
krsk@dia-m.ru

Казань
kazan@dia-m.ru

Ростов-на-Дону
rnd@dia-m.ru

Екатеринбург
ekb@dia-m.ru

Кемерово
kemeroovo@dia-m.ru

Нижний Новгород
nnovgorod@dia-m.ru

мобильное приложение



www.dia-m.ru